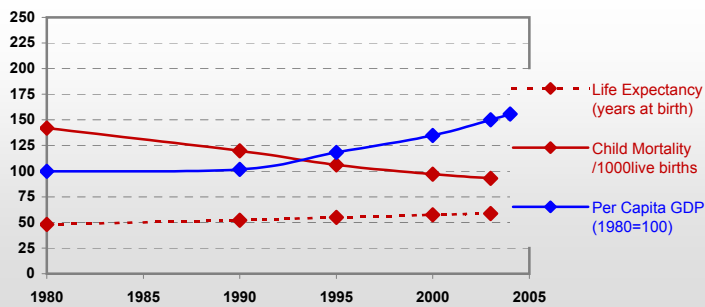


# Sudan



## General / Welfare

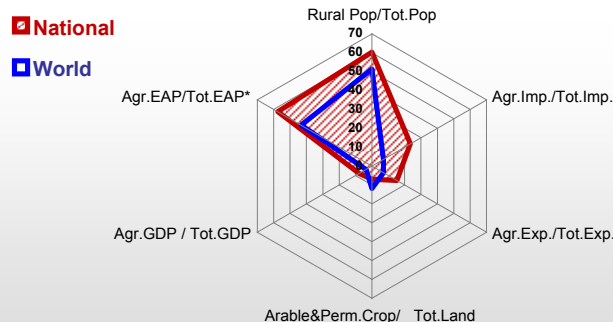
Population <sup>04 *</sup>	34 333
Per Capita GDP <sup>04 **</sup>	449
Agricultural GDP/Ag.Population <sup>04**</sup>	60
Total Exports <sup>04 ****</sup>	2 711
Total Imports <sup>04 ****</sup>	2 609
Agric. External Assistance <sup>03 ***</sup>	52 442
Food Consumption Inequality (G) <sup>ly</sup>	0.20
Income Inequality (G) <sup>ly</sup>	-
Land Inequality (G) <sup>ly</sup>	-
Undernourished Population % <sup>01-03</sup>	27



\* 1000 \*\* \$ \*\*\* 1000 \$ \*\*\*\* Million \$ --- (G) : Gini Coefficient --- GDP at 2000 Constant Prices

## Agriculture In The Economy<sup>ly</sup>

## Resources

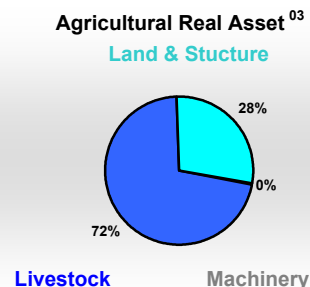
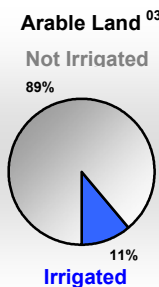
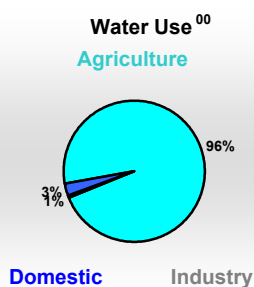
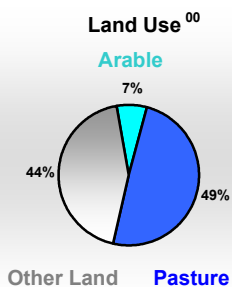


Arable Land <sup>00 *</sup>	16 233
Permanent Crops <sup>00 *</sup>	420
Pasture <sup>00 *</sup>	117 180
Cattle & Buffaloes <sup>04 **</sup>	38 325
Sheeps & Goats <sup>04 **</sup>	90 000
Tractors <sup>03 / *</sup>	1
Harvesters&Threshers <sup>03 / *</sup>	0
Fertilizers Production <sup>02 ***</sup>	-
Fertilizers Consumption <sup>02 ***</sup>	69 496
Rainfall Index <sup>02 (mm)</sup>	741

\* EAP : Economically Active Population ---

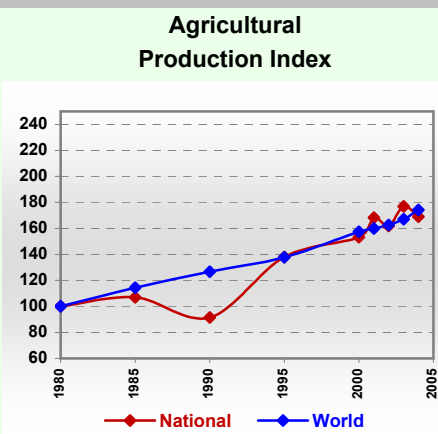
\* 1000ha \*\* 1000heads \*\*\* Tonnes N,P<sub>2</sub>O<sub>5</sub>,K<sub>2</sub>O

## Resources Distribution



## Production

Agriculture <sup>04 *</sup>		Forestry <sup>04</sup>	
Cereals	3 643	Indust.Roundwood **	2 173
Meat	715	Wood Fuel **	17 482
Fruits & Vegetables	3 028	Wood Charcoal *	850
Roots & Tubers	172	Sawn Wood **	51
Pulses	272	Wood Based Panels **	2
Oilseeds (oil equiv.)	548	Wood Pulp *	-
Sugar Crops	5 500	Paper, Paper Board *	3
Milk	5 106	<b>Fisheries<sup>04 *</sup></b>	
Eggs	47	Pelagic	0
Stimulants	-	Freshwater	56
Tobacco	-	Demersal	0
Fiber Crops	90	Molluscs	-



\* 1000Tonnes \*\* 1000m<sup>3</sup>

# Sudan

## Trade <sup>04</sup>

Agricultural Imports *	638
% 4 Major Imports in Agr. Imp.	61
% Agr. Imports in Tot. Imports	24
Fishery Imports *	1
Forestry Imports *	46
Agricultural Exports *	395
% 4 Major Exports in Agr. Exp.	77
% Agr. Exports in Tot.Exports	15
Fishery Exports *	0
Forestry Exports *	2



\* Million \$

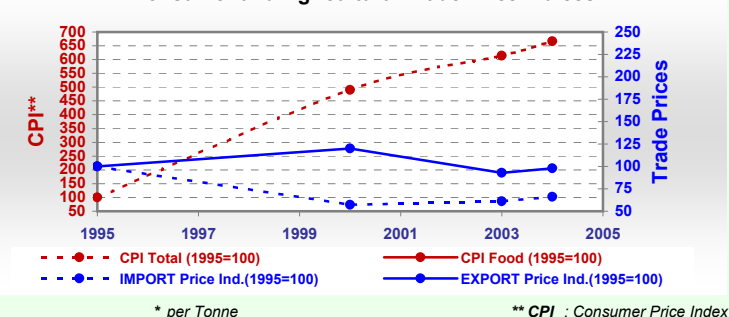
### Trade Partners & Products

Major Import Partner	-	-	-
Major Exports Partner	-	-	-
Major Imports	Wheat	Sorghum	Food prepared
Major Exports	Sesame seed	Sheep	Cotton lint

## Prices

Producer Prices <sup>01-03</sup>	\$*	\$Green *
Wheat	228	205
Rice	390	351
Maize	396	355
Soybean	-	-
Coffee	-	-
Tobacco	-	-
Cow Milk	514	461
Cattle (Live Weight)	902	810
Pig (Live Weight)	-	-
Chicken (Live Weight)	941	845

### Consumer and Agricultural Trade Price Indices

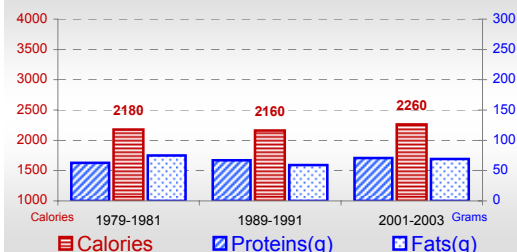


\* per Tonne

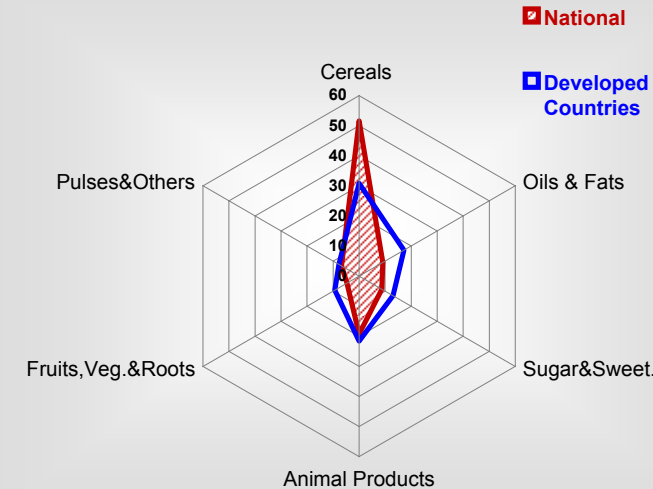
\*\* CPI : Consumer Price Index

## Consumption

### Per Capita Daily Consumption



### Source of Dietary Energy Consumption % <sup>01-03</sup>



### Per Capita Daily Calorie Intake From Selected Food Items <sup>01-03</sup>

Rice	14
Wheat	308
Maize	20
Sorghum	670
Potatoes	1
Cassava	1
Sugar	194
Soybean Oil	1
Palm Oil	7
Milk	297
Anim.Fats(Raw&Butter)	21
Eggs	5
Pigmeat	-
Poultry Meat	3
Bovine Meat	58
Sheep & Goats Meat	47

### Food Balance

01-03 (1000Tonnes)

Food Groups	Production (+)	Exports (-)	Imports (+)	Stock changes & Other uses (-)	Consumption (=)
Cereals	5 143	29	1 118	1 790	4 442
Veg.oils	237	7	61	42	250
Sugar&Sw.	749	60	74	101	662
Roots&Tub.	172	-	1	20	153
Meat	712	8	-	0	704
Milk	5 042	-	92	210	4 925

Time reference=<sup>99-01</sup>:1999-2001, <sup>00</sup>:2000, <sup>02</sup>:2002, <sup>00-02</sup>:2000-2002, <sup>03</sup>:2003, <sup>04</sup>:2004, <sup>ly</sup>:Latest Available Year